



FLEXIAGENT



## Park Crescent

Southport, PR9 9LJ

**£1,000 Per Month**

Park Crescent, Southport, this delightful two-bedroom first-floor apartment offers a perfect blend of comfort and elegance. The flat boasts an open spacious reception room that seamlessly integrates with a modern kitchen, creating an inviting space for both relaxation and entertaining.

The living area is adorned with huge windows that provide a stunning view of the picturesque Hesketh Park, allowing natural light to flood the room and enhance its airy atmosphere. The first bedroom is particularly striking, featuring large windows set within the turret of the building, offering a unique vantage point to enjoy the park's beauty. The second bedroom is equally charming, showcasing exquisite stained glass feature windows that add a touch of character and warmth.

This apartment is not just a home; it is a sanctuary that invites you to unwind and appreciate the serene surroundings. With its prime location near the park, residents can enjoy leisurely strolls and the vibrant community that Southport has to offer. This property is an ideal choice for those seeking a stylish and comfortable living space in a sought-after area.

One of the standout features of this property is the access to a communal garden, where residents can enjoy the beauty of nature and unwind in a tranquil setting. Additionally, the flat comes with an allocated parking space, providing you with the convenience of secure off-street parking. For added ease, the building is equipped with a lift.

This property is a wonderful opportunity for anyone looking to settle in a vibrant area while enjoying the benefits of modern living. Don't miss your chance to make this charming flat your new home.

- Two-bedroom first floor flat
- Views of Hesketh Park
- Stained glass feature
- Close to local amenities
- Easy access to transport links
- Viewing highly recommended
- Communal garden and lift access

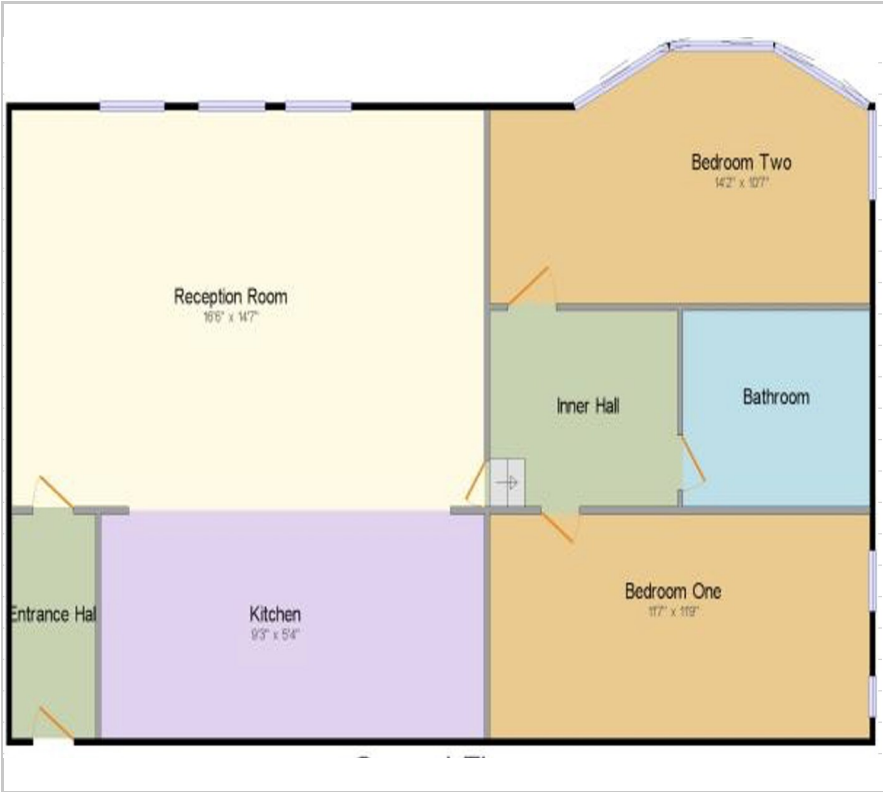
### Viewing

Please contact our Flexi-Agent Southport Lettings Office on 01704 889455 if you wish to arrange a viewing appointment for this property or require further information.





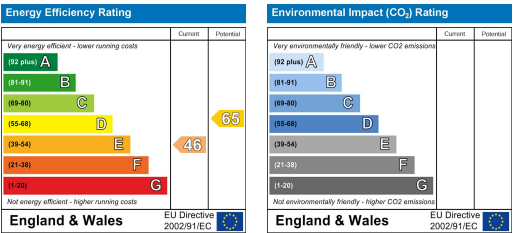
Floor Plan



Area Map



Energy Efficiency Graph



These particulars, whilst believed to be accurate are set out as a general outline only for guidance and do not constitute any part of an offer or contract. Intending purchasers should not rely on them as statements of representation of fact, but must satisfy themselves by inspection or otherwise as to their accuracy. No person in this firms employment has the authority to make or give any representation or warranty in respect of the property.